

Polypropylene Homopolymer Inch



CPV Ltd
Woodington Road, East Wellow
Romsey, Hampshire, SO51 6DQ
Tel: 01794 322884
Web: www.cpv.co.uk/chemflo

 **CPV-CHEMFLO**
pp & pvdf process pipe systems



2-Way Ball Valve – Double Union (Manual Operation)

FUSION SOCKETS	n.b.	DN	PN bar	EPDM	FPM	L	Weight (g)
	½"	15	10	PI.021.B1-	PI.021.B2-	100	160
	¾"	20	10	PI.026.B1-	PI.026.B2-	113	230
	1"	25	10	PI.033.B1-	PI.033.B2-	124	280
	1¼"	32	10	PI.042.B1-	PI.042.B2-	140	470
	1½"	40	10	PI.048.B1-	PI.048.B2-	164	740
	2"	50	10	PI.060.B1-	PI.060.B2-	192	1100
	3"	80	6	PI.089.B1-	PI.089.B2-	286	3870
	4"	80	6	PI.114.B1-	PI.114.B2-	295	3870

THREADED SOCKETS FBSP	n.b.	DN	PN bar	EPDM	FPM	L	Weight (g)
	½"	15	10	PI.021.B17	PI.021.B27	100	160
	¾"	20	10	PI.026.B17	PI.026.B27	113	230
	1"	25	10	PI.033.B17	PI.033.B27	124	280
	1¼"	32	10	PI.042.B17	PI.042.B27	140	470
	1½"	40	10	PI.048.B17	PI.048.B27	164	740
	2"	50	10	PI.060.B17	PI.060.B27	192	1100
	3"	80	6	PI.089.B17	PI.089.B27	286	3870
	4"	80	6	PI.114.B17	PI.114.B27	295	3870

Dimensions Common to all Ball Valves	n.b.	A	Z	t	D	H	B
½"	62	68	16	53	72	40	
¾"	69	79	17	62	77	52	
1"	73	84	20	70	81	52	
1¼"	83	96	22	84	99	64	
1½"	94	114	25	100	107	73	
2"	108	134	29	121	116	85	
3"	160	208	39	187	160	132	
4"	160	207	44	187	160	132	

All dimensions in mm

2-Way Ball Valve - Double Union (Manual Operation)

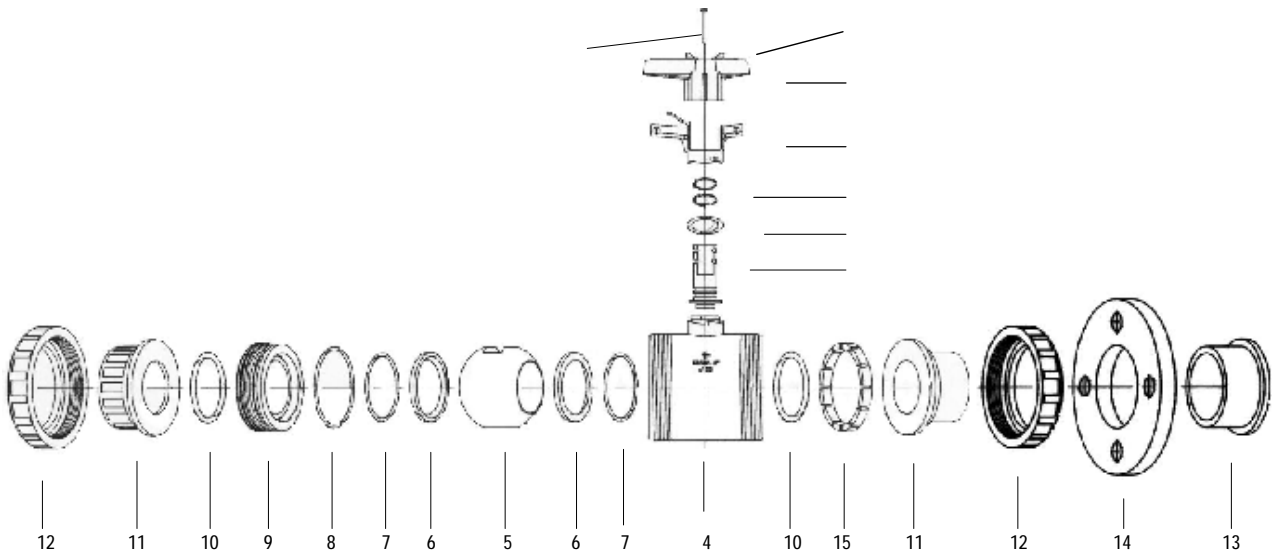
- Full Bore (½" to 3")
 - Polypropylene Body
 - PP Nuts Reinforced with Glass
 - True Union Design
 - Double Sided Ball Blocking

 - Seats
 - O-rings

 - Double Shaft Seals
 - Range

 - Choice of End Connectors

 - Valve Support Brackets
 - Spare Parts
 - Clear Polythene Packaging
 - Actuators
 - Quality Control
- Suitable for pressure pipelines and drainage of hazardous fluids.
Resistant to corrosive fluids at temperatures from 0°C to 80°C.
Long working life.
Enables installation or servicing without disturbing pipeline.
Safety Design. Downstream piping may be disconnected under full line pressure without leakage.
PTFE backed up with O-rings to ensure leak free shut off and long working life. EPDM resistant to corrosive chemicals. FPM available for more hostile applications.
Gives maintenance free working and eliminates leakage.
Sizes ½" → 2" pressure rated 10 bar.
Sizes 3" and 4" pressure rated to 6 bar.
Fusion sockets, fusion spigots, and threaded sockets. Flanged ends to customer specification.
Available for all sizes.
Available for all sizes
For ease of identification and protection in transit and storage.
Pneumatic or electric to customer specification.
Certification Din En19. Each Valve Is Tested During Manufacture To Din 3442 Ti Standard.



No.	Description	No.	Description	No.	Description
1.	Handle	8.	O-ring	15.	Retaining Ring
2.	O-ring	9.	Thrust Collar	17.	O-ring
3.	Shaft	10.	O-ring	20.	Spring Loaded Locking Sleeve
4.	Body	11.	Connection	21.	Spigot
5.	Ball	12.	Union Nut	22.	Screw and Screw Cover
6.	Ball Seating Joint	13.	Flange Adaptor		
7.	O-ring	14.	Flange		



Non-Return Valve: Cone Type with Spring

FUSION SOCKETS	n.b.	DN	PN bar	EPDM	FPM	L	Weight (g)
	½"	15	10	PI.021.C1-	PI.021.C2-	100	120
	¾"	20	10	PI.026.C1-	PI.026.C2-	113	180
	1"	25	10	PI.033.C1-	PI.033.C2-	124	230
	1¼"	32	10	PI.042.C1-	PI.042.C2-	140	370
	1½"	40	10	PI.048.C1-	PI.048.C2-	164	580
	2"	50	10	PI.060.C1-	PI.060.C2-	192	820
	3"	80	6	PI.089.C1-	PI.089.C2-	286	3280
	4"	80	6	PI.114.C1-	PI.114.C2-	315	3280

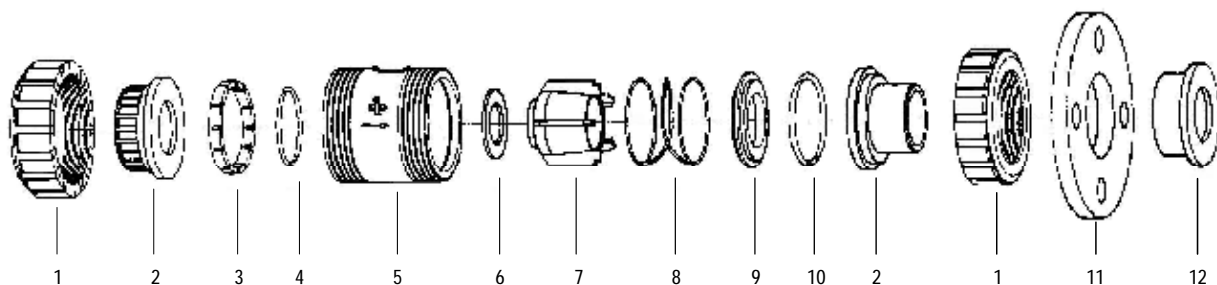
THREADED SOCKETS FBSP	n.b.	DN	PN bar	EPDM	FPM	L	Weight (g)
	½"	15	10	PI.021.C17	PI.021.C27	100	120
	¾"	20	10	PI.026.C17	PI.026.C27	113	180
	1"	25	10	PI.033.C17	PI.033.C27	124	230
	1¼"	32	10	PI.042.C17	PI.042.C27	140	370
	1½"	40	10	PI.048.C17	PI.048.C27	164	580
	2"	50	10	PI.060.C17	PI.060.C27	192	820
	3"	80	6	PI.089.C17	PI.089.C27	286	3280
	4"	80	6	PI.114.C17	PI.114.C27	315	3280

Dimensions Common to all Non Return Valves	n.b.	A	Z	t	D	B
½"		62	68	16	53	40
¾"		69	79	17	62	52
1"		73	84	20	70	52
1¼"		83	96	22	84	64
1½"		94	114	25	100	73
2"		108	134	29	121	85
3"		160	208	39	187	132
4"		160	207	44	187	132

All dimensions in mm

Non-Return Valve – Double Union - Cone Type with Spring

- **Non-Return** One way operation. Spring to control opening and closing. Suitable for pumps, compressors and fluids in vertical and horizontal applications. Not suitable for slurries or fluids containing solids.
- **Full Sectional Area of Flow** Non restrictive area is equal to the full nominal bore. Low pressure loss and suitable for high flow rates
- **Polypropylene Body and Cone** Resistant to corrosive fluids at temperatures from 0°C to 80°C. Long working life.
- **PP Nuts, Glass Reinforced**
- **True Union Design** Enables installation or servicing without disturbing pipeline.
- **Spring Loaded** Can be used in horizontal and vertical applications. Spring coated with PTFE.
- **O-rings and Seal** EPDM resistant to corrosive chemicals. FPM available for more hostile applications.
- **Range** Sizes ½" → 2" pressure rated 10 bar.
Sizes 3" and 4" pressure rated to 6 bar.
- **Choice of End Connectors** Fusion sockets, fusion spigots, and threaded sockets. Flanged ends to customer specification.
- **Spare Parts** Available for all sizes
- **Clear Polythene Packaging** For ease of identification and protection in transit and storage.
- **Quality Control** Certification DIN EN19. Each valve is tested during manufacture to DIN 3442 T1 standard.



No.	Description	Material	No.	Description	Material
1.	Union Nut	PP	6.	Gasket	EPDM/FPM
2.	Fusion Socket	Metric/Inch	7.	Hollow Cone	PP
	Threaded Socket	Inch	8.	Spring	SS/PTFE
	Fusion Spigot	Metric	9.	Thrust Collar	PP
3.	Retaining Ring	PP	10.	O-ring	EPDM/FPM
4.	O-ring	EPDM/FPM	11.	Backing Ring	As required
5.	Body	PP	12.	Flange Adapter	PP